

GLAZINGVISION

things are looking up.



sliding **rooflights**



sliding over fixed

If space on the roof is tight the Glazing Vision 'sliding over fixed' rooflight could be the best option.

This rooflight is usually split into two sections, with one sliding pane of glass moving over a fixed section.

This configuration allows the maximum amount of light to be transmitted whilst opening up 50% of the overall footprint for ventilation.

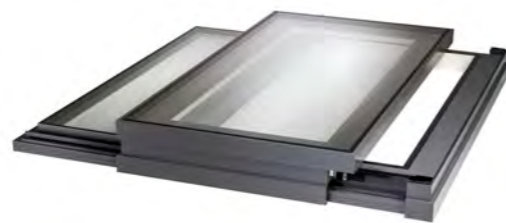
Power is transmitted through a twin drive rack and pinion system with large diameter carriage wheels and hard anodised tracks to provide smooth travel when in motion.

The Sliding Over Fixed features a one way solenoid clutch and built in anti lifting mechanism so the sliding section cannot be forcibly back driven.

Our Qualicoat approved polyester powder coated frame is supplied dual colour as standard and is thermally broken using 39mm polyamide thermal breaks and closed cell PIR insulation.

Improved thermal performance can be achieved by specifying triple glazing which is now a standard option with the latest frame design.

Flat sliding rooflights can only be used for access if suitable balustrades are installed, Glazing Vision strongly recommends seeking guidance from building control before commencing works on site.



Bespoke sliding over roof unit including wall abutment detail, used for terrace access in London property.



sliding over roof

For larger areas with sufficient unobstructed roof space for the sliding section you should consider a 'sliding over roof' rooflight.

With this rooflight the glazed section slides as a single leaf and is supported by tracks on the roof itself in the open position. These form part of the framework and allow more scope in size and specification whilst maintaining the 100% clear opening.

The Sliding Over Roof includes all of the main security features of the Sliding Over Fixed and is operated using the same rack and pinion drive mechanism with one way clutch system.

All sliding rooflights can be supplied with remote control and connected to a rain sensor, thermostat and Building Management System.

Flat sliding rooflights can only be used for access if suitable balustrades are installed, Glazing Vision strongly recommends seeking guidance from building control before commencing works on site.



open engineering

Bespoke sliding over roof unit provides a connection with the outdoors in this minimalist scheme featured in C4's George Clarke's Amazing Spaces, and BBC 1's 'Luther'

